

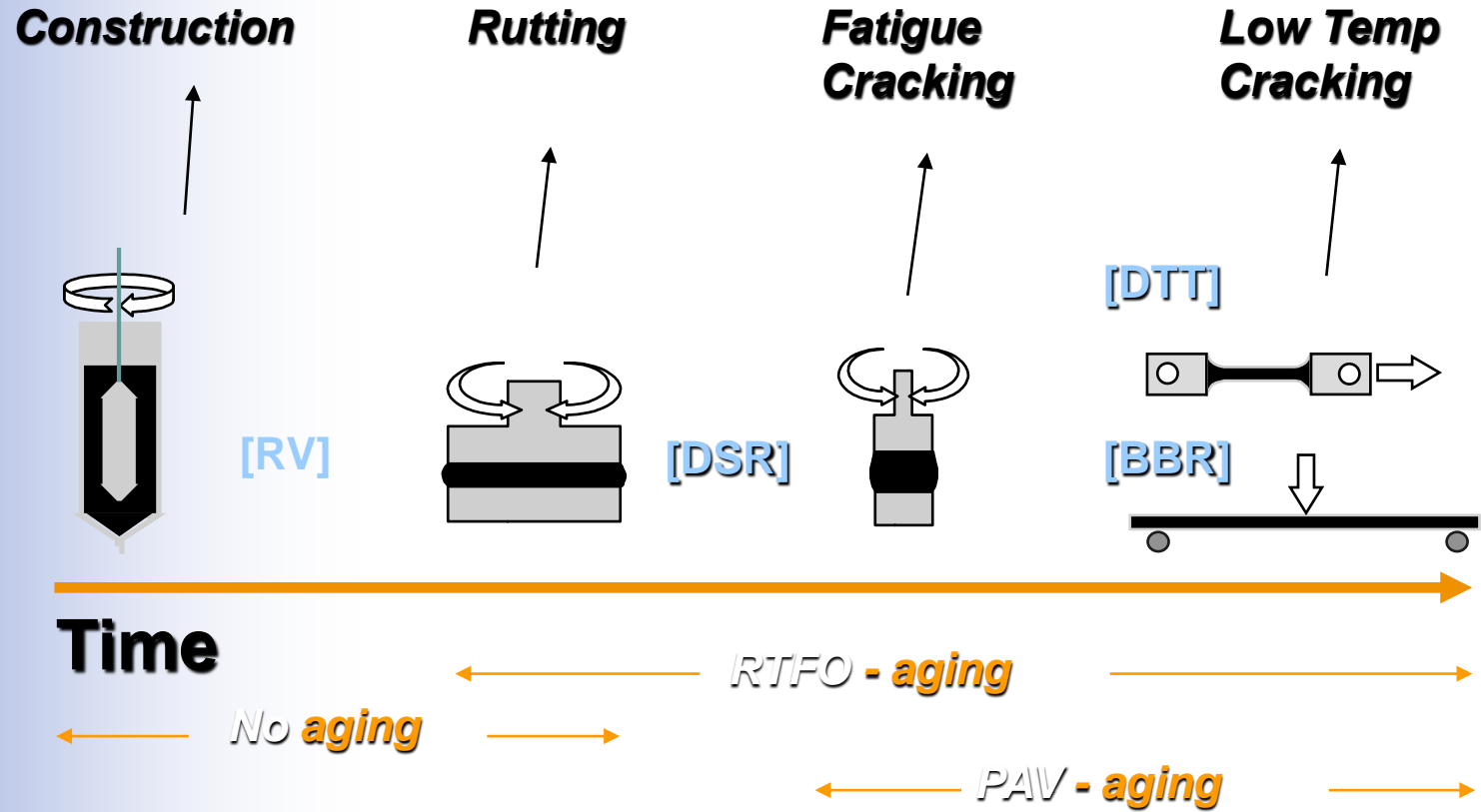
Asphalt Binders and Aging 20Hr or 40Hr PAV

John A. D'Angelo

D'Angelo Consulting, LLC

Johndangelo@dangeloconsultingllc.com

Superpave Binder Specification



Raveling



Fatigue Cracking



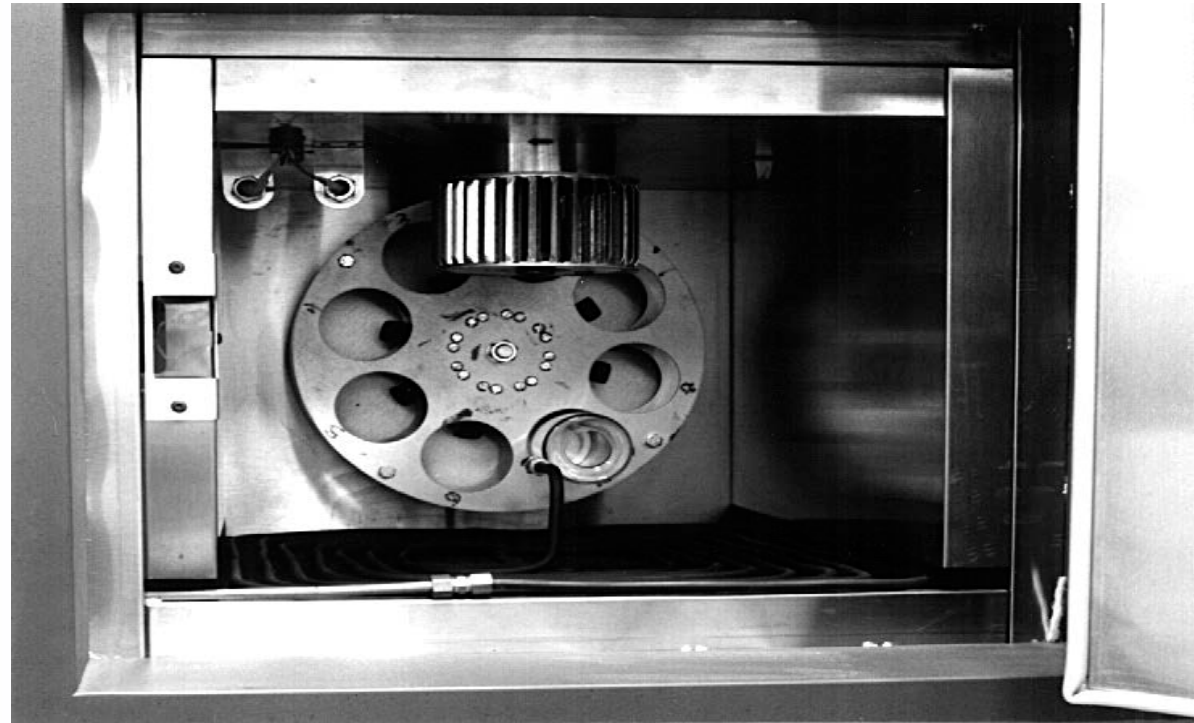
Low Temperature Cracking

D'Angelo Consulting



Superpave Conditioning

RTFOT –
Short
term
aging

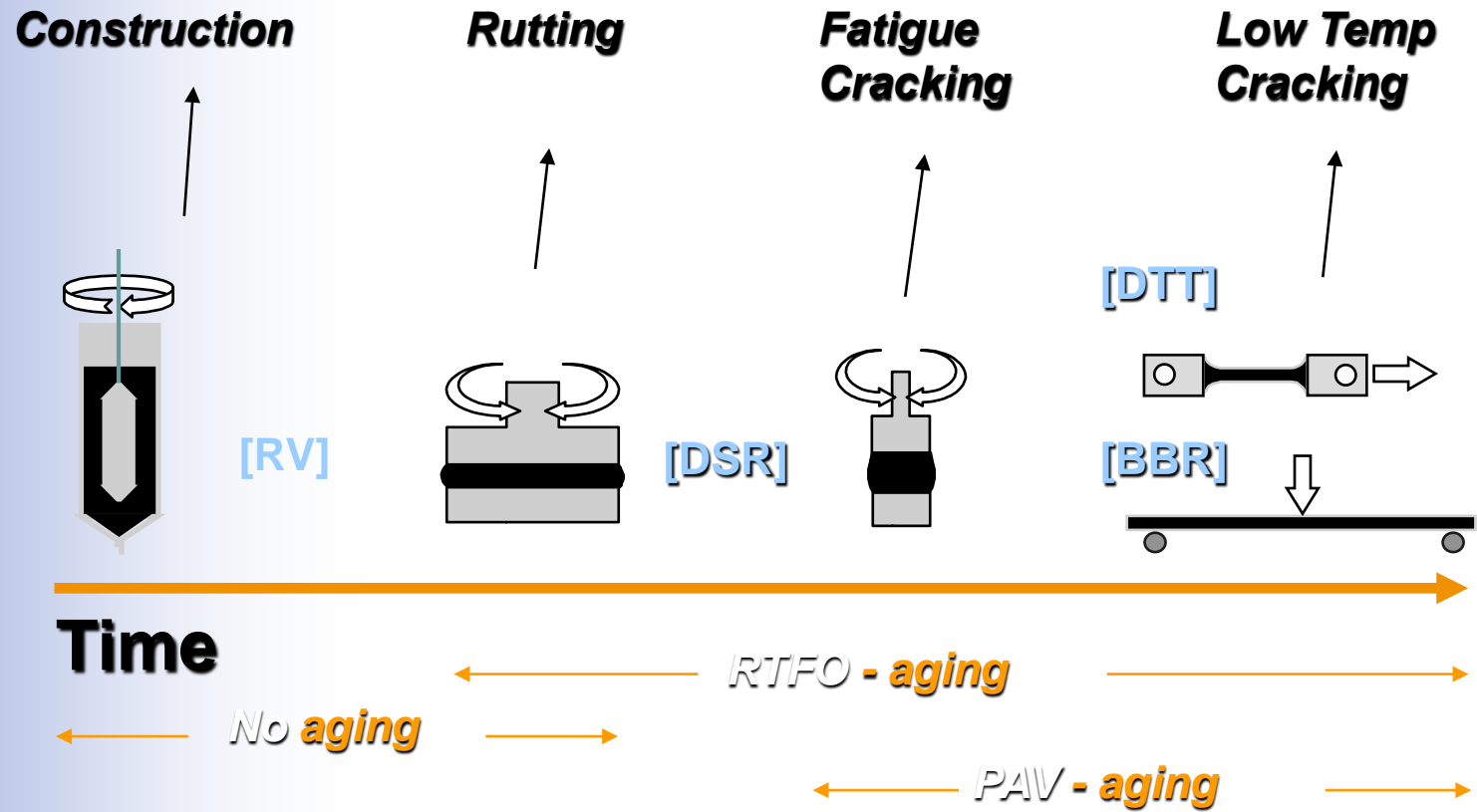


Aging Long Term

- Current PAV 20 hrs at 100 C, 100 psi.
- 20 hr PAV mandates two days for binder classification.



Superpave Binder Specification



Current Aging approaches

- Current 20 hour PAV does not represent long enough aging condition to identify critical conditions
 - Extend 20 hour PAV to 40 hour PAV
 - Longer time to grade
 - Use thinner films in the PAV
 - Reduced material for testing
 - Use extremely thin films in an oven.
 - Very small amounts of material special testing 4mm DSR

Binder Aging

- Longer Aging times being look at to identify embrittlement.
 - Are Longer times needed?
 - Longer time to grade binders
- Can aging ratios identify the same issues?
 - More tests
 - Same time for grading binder

Task Group Goals

- Using an indicator can the 40 hour PAV be estimated from the 20 hour PAV
- This would be used as an indicator not a direct measure.
- If the estimated 40 hour PAV acceptable extended aging not needed.
- If the estimated 40 hour is not acceptable actual 40 hour testing needed.

ΔT_c 20 and 40 hour PAV

- Can we determine where the 40hr PAV value we go based on the 20hr PAV?
- Look at the 20hr value and the change from original to 20hr.

ΔT_c

- There are clear indications that the 20hr PAV and the change from original provides clear indications if 40 hr PAV will fail.
- Rate of change of RTFOT to 20hr PAV $(RTFOT \Delta T_c - 20hr PAV)/20hr$ projected to 40hr

Prediction of 40hr ΔT_c

To predict 40hr ΔT_c determine rate of change RTFOT to 20hr PAV $(\Delta T_c \text{ RTFOT} - \Delta T_c \text{ 20hr PAV})/20\text{hr}$, to predict 40hr ΔT_c

Age	$\Delta T_c, ^\circ\text{C}$													
RTFO	0.5	1.0	-2.6	1.7	2.8	2.3	-1.3	1.3	0.6	1.9	0.4	1.3	1.7	1.6
20 hr. PAV	-3.3	-0.9	-7.0	-1.0	1.7	-0.5	-4.8	-0.9	-2.7	0.8	-3.1	-0.5	-0.7	-2.3
40 hr. PAV	-6.1	-1.4	-12.4	-2.3	0.8	-4.7	-7.6	-2.6	-5.8	-2.6	-8.7	-2.9	-2.2	-8.4
predicted	-7.1	-2.8	-11.4	-3.8	0.6	-3.3	-8.3	-3.0	-6.0	-0.3	-6.6	-2.3	-3.1	-6.2
diff	1.1	1.4	-1.0	1.5	0.2	-1.4	0.7	0.5	0.2	-2.3	-2.1	-0.6	0.9	-2.2

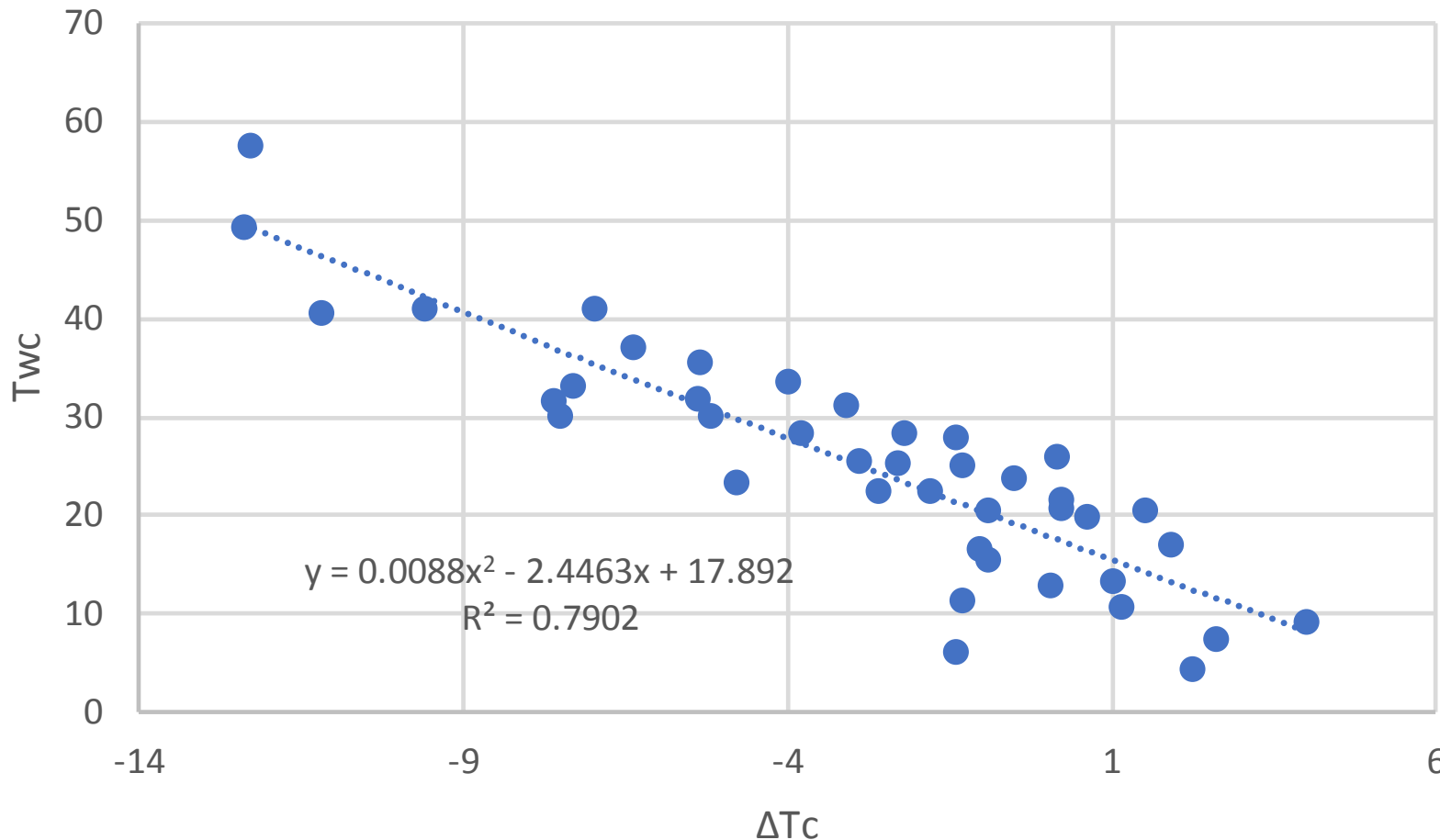
Asphalt Binder Aging

- Are longer aging times needed?
- Binder aging ratios may capture the same issues without longer aging times.
- There are issues with measuring ΔT_c on RTFOT material.

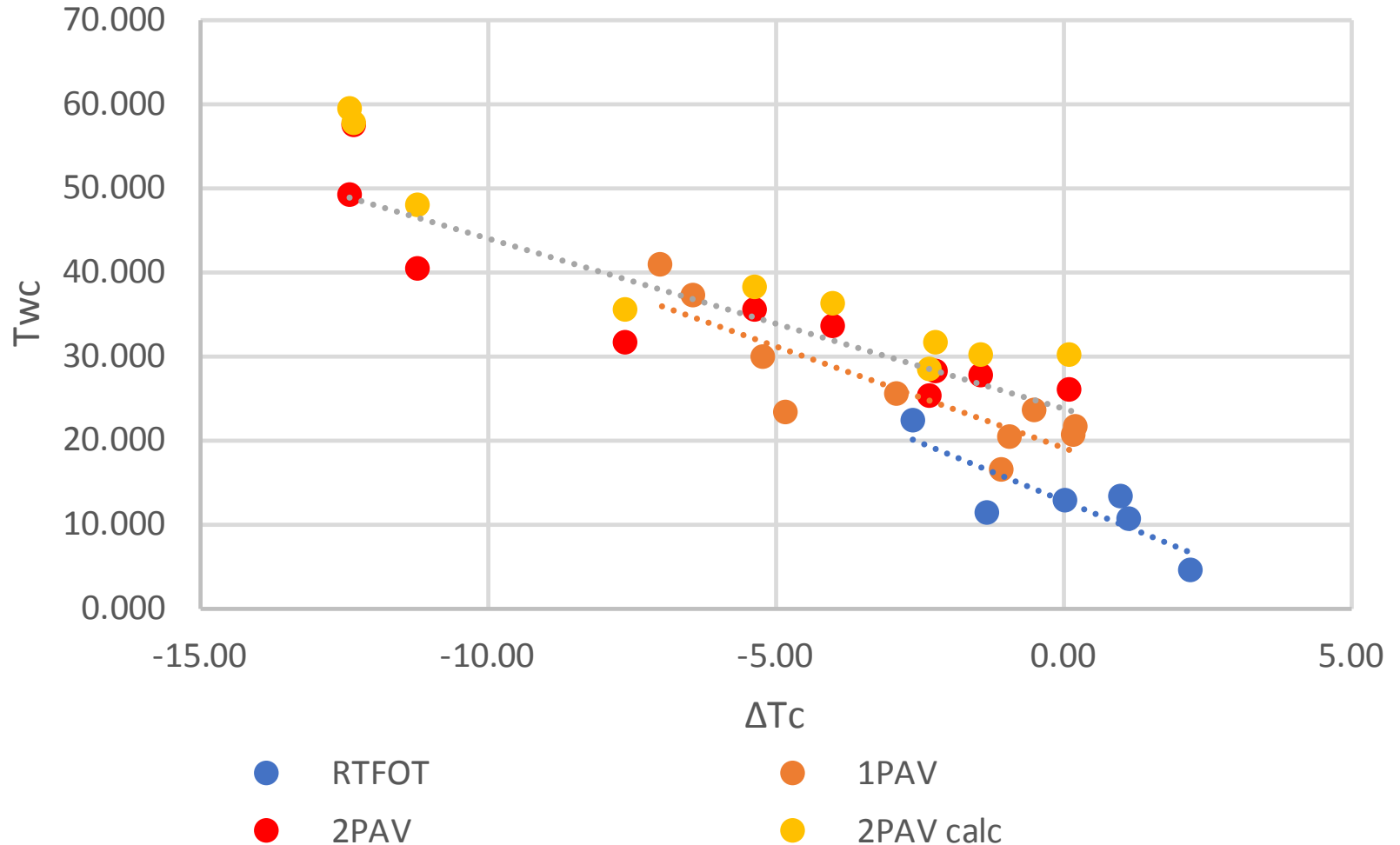
Alternate criteria for evaluation

- Are other criteria that provide similar data to ΔT_c ?
- The cross over temperature T_{wc} may provide similar information.
- The cross over temperature – Temperature measured at 10 radians/s where the phase angle is 45 degrees or tan delta is 1. This is where the Retardation and Relaxation modulus is equal.

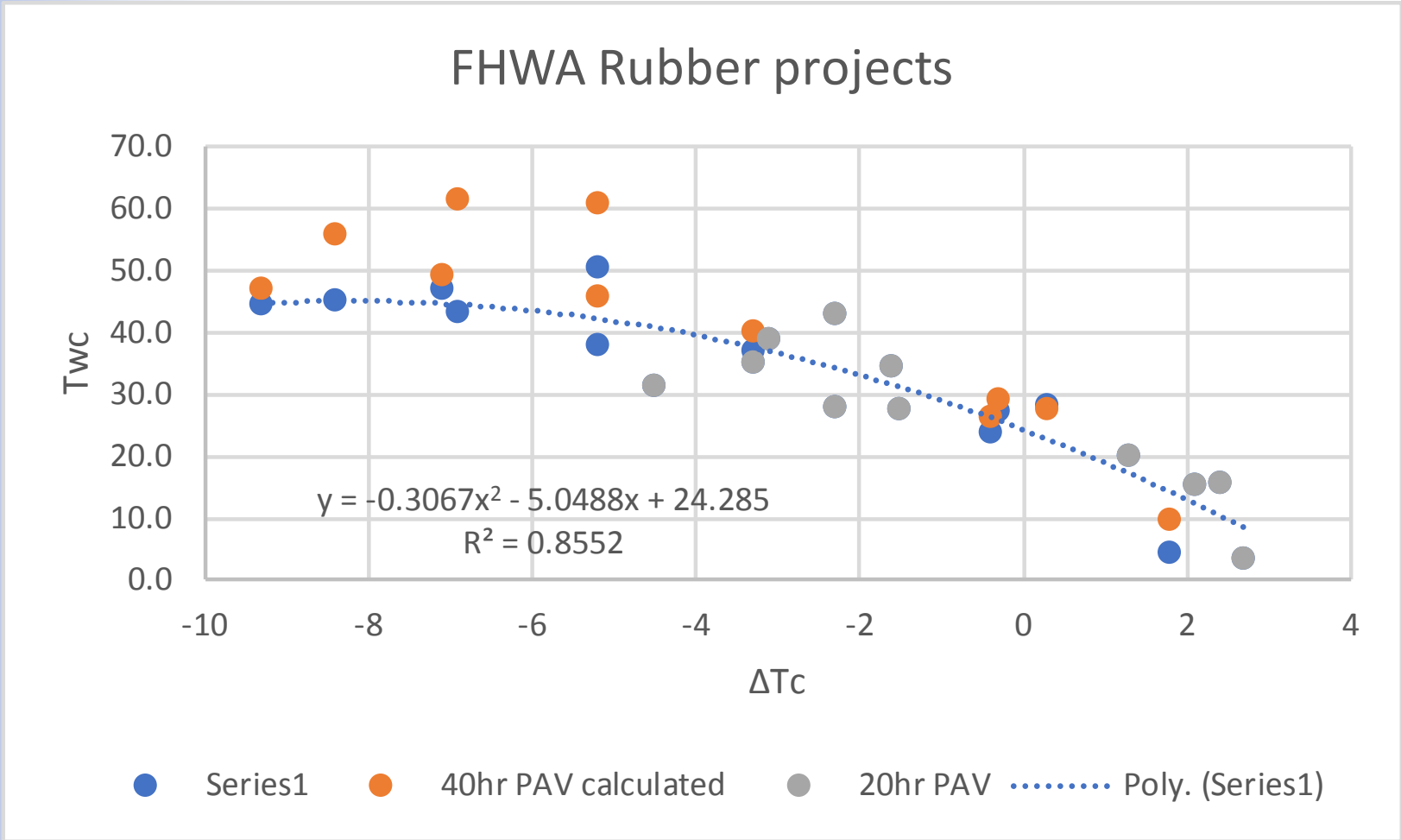
Mathy, Ergon Data RTFOT 1 and 2 PAV comparison.



Mathy, Ergon Data RTFOT 1 and 2 PAV comparison.

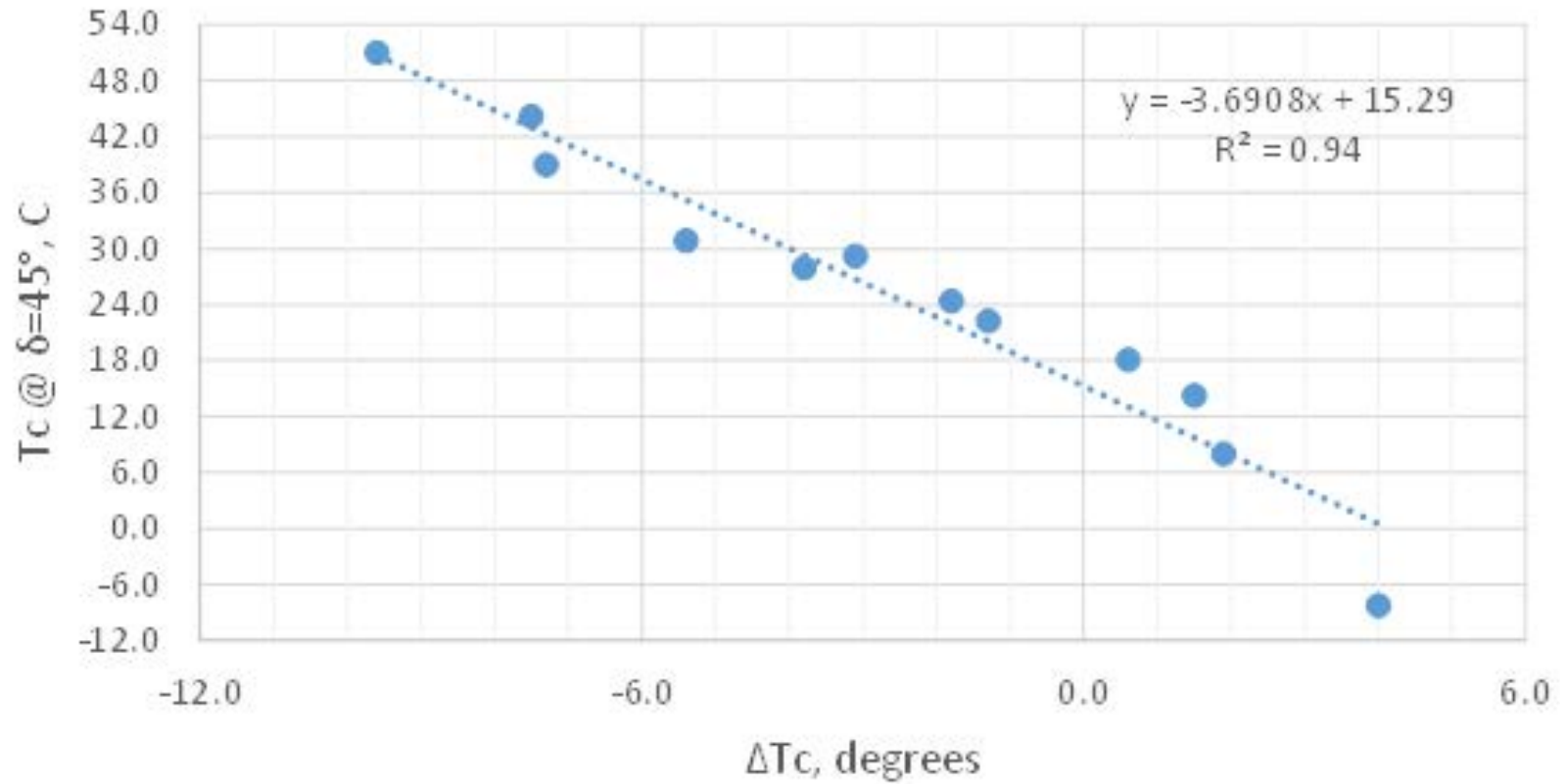


FHWA binder many Rubber 20 and 40 hr PAV



Data from Original Anderson Paper.

AAPT 06-01 Asphalt Binders



Status

- There is a close relationship between cross over temperature and ΔT_c .
- Cross over temperature T_{wc} is easy to measure on RTFOT material.
- ΔT_c is difficult to measure on RTFOT material.

Status

- Set limit on ΔT_c for 20hr PAV and estimate 40hr PAV using the T_{wc} .
- If ΔT_c is bad at 20hr PAV sample fails.
- If ΔT_c is very good at 20hr PAV no issue.
- If ΔT_c is questionable and 40hr calculated from T_{wc} good no issue
- If ΔT_c is questionable and 40hr calculated from T_{wc} need to run 40hr PAV.

Thank You

Discussions